

# Product Data Sheet

DIN 41612 Shroud C/R with nut,  
Part No. 115-15702

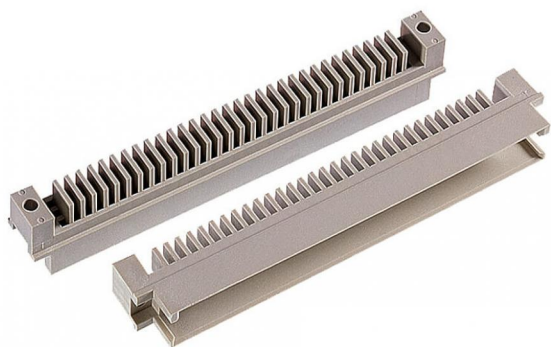


Illustration similar



Perpendicular

- for PCB 3.2 mm
- for post length 17 mm
- C/R with nut



» to product on [www.ept.de](http://www.ept.de)



» to product group DIN 41612

# Product Data Sheet

DIN 41612 Shroud C/R with nut,  
Part No. 115-15702



---

## Technical Specifications

### Basics

---

Specification	IEC 60603-2 (DIN 41612)
Operating Temperature Range	-55°C to +125°C

### Material

---

Insulator Material	PBT glass filled UL 94 V-0
--------------------	----------------------------

### Mechanical

---

Pitch	2.54 mm
-------	---------

### Approval / Compliance

---

Environment	RoHS compliant
-------------	----------------

# Product Data Sheet

DIN 41612 Shroud C/R with nut,  
Part No. 115-15702

---



## Drawings

Component data in 2D and 3D format you can download here:

[» PDF](#)

[» 3D IGES](#)

[» 3D STEP](#)

[» 3D PDF](#)