

# Product Data Sheet

Power Terminals pitch 5.08 x 7.62 mm,  
Part No. 910-22715/1

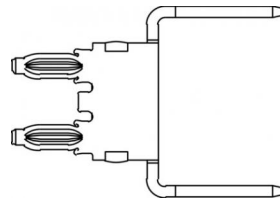
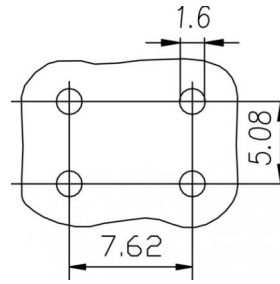
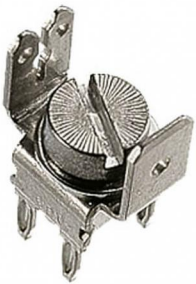


Illustration similar



Press-fit



Power



Rugged

- thread M4
- termination length 4.5 mm



» to product on [www.ept.de](http://www.ept.de)



» to product group Power Terminals

# Product Data Sheet

Power Terminals pitch 5.08 x 7.62 mm,  
Part No. 910-22715/1



---

## Technical Specifications

### Basics

---

Termination Technology	Press-fit
Termination Length	4.5 mm
Operating Temperature Range	-55°C to +125°C

### Material

---

Contact Material	Copper alloy
Plating	Sn

### Mechanical

---

Pitch	5.08 x 7.62 mm
-------	----------------

### Electrical

---

Operational Current	20° 45A, 70° 30A, 100° 25A
---------------------	----------------------------

### Processing

---

Thread	M4
Max. Fastening Torque	1.3 Nm

### Approval / Compliance

---

Environment	RoHS compliant
-------------	----------------

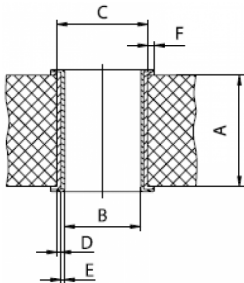
# Product Data Sheet

Power Terminals pitch 5.08 x 7.62 mm,  
Part No. 910-22715/1



## Hole Specifications

Plated through-hole according to IEC 60352-5



Material	imm. Sn printed circuit boards
<b>Nominal Hole</b>	<b>Ø 1.6 mm</b>
<b>A PCB Thickness</b>	min 2.9 mm
<b>B Plated Hole</b>	Ø 1.6 +0.09 / -0.06 mm
<b>C Drill Hole</b>	1.75 ±0.025 mm
<b>D Cu Plating</b>	min. 25 µm
<b>E Surface</b>	imm. Sn plating, max. 1.5 µm
<b>F Annular Ring</b>	min. 0.1 mm

Material	Ni, Au printed circuit boards
<b>Nominal Hole</b>	<b>Ø 1.6 mm</b>
<b>A PCB Thickness</b>	min 2.9 mm
<b>B Plated Hole</b>	Ø 1.6 +0.09 / -0.06 mm
<b>C Drill Hole</b>	1.75 ±0.025 mm
<b>D Cu Plating</b>	min. 25 µm
<b>E Surface</b>	Ni, Au plating, 0.05 - 0.2 µm Au over 2.5 - 5 µm Ni
<b>F Annular Ring</b>	min. 0.1 mm

Material	HAL Sn printed circuit boards
<b>Nominal Hole</b>	<b>Ø 1.6 mm</b>
<b>A PCB Thickness</b>	min 2.9 mm
<b>B Plated Hole</b>	Ø 1.6 +0.09 / -0.06 mm
<b>C Drill Hole</b>	1.75 ±0.025 mm
<b>D Cu Plating</b>	min. 25 µm
<b>E Surface</b>	HAL Sn, 5 - 15 µm
<b>F Annular Ring</b>	min. 0.1 mm

# Product Data Sheet

Power Terminals pitch 5.08 x 7.62 mm,  
Part No. 910-22715/1

---



## Accessories

- » Power Terminals Socket cap screw DIN 84, M4  
Part Number 910-20145
- » Power Terminals Lock nut  
Part Number 910-20015
- » Power Terminals Washer  
Part Number 910-20320

## Drawings

Component data in 2D and 3D format you can download here:

- » [PDF](#)
- » [3D IGES](#)
- » [3D STEP](#)
- » [3D PDF](#)