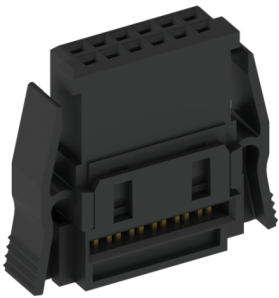


# Product Data Sheet

One27 Female IDC,  
Part No. 404-59026-61



26 Pins



Illustration similar



Cable-to-Board



High Density

- 26 pins
- for IDC-connection with ribbon cable AWG 30/7
- pitch ribbon cable 0.635 mm
- pitch connector 1.27 mm
- Performance level 1
- The female IDC is designed to be used for cable assembly. Observe the recommendations for processing.



» to product on [www.ept.de](http://www.ept.de)



» to product group One27

# Product Data Sheet

One27 Female IDC,  
Part No. 404-59026-61



## Technical Specifications

### Basics

No. of Contacts	26
Termination Technology	IDC
Operating Temperature Range	-55°C to + 125°C (depending on used cable type)

### Material

Insulator Material	LCP, UL 94 V-0
CTI value <i>IEC 60112</i>	175
Contact Material	Copper alloy
Plating	Au over PdNi over Ni

### Mechanical

Pitch	1.27 mm
Mating Force per Pin	≤ 0.5 N
Separating Force per Pin	≥ 0.1 N
Durability <i>IEC 60512-9-1</i>	Performance level 1: 500 mating cycles
Vibration, sinusoidal <i>IEC 60512-6-4</i>	10 - 2000 Hz, 20g
Contact mating problems if vibrations occur, sinusoidal <i>IEC 60512-2-5</i>	≤ 1 μs
Shock, semi-sinusoidal <i>IEC 60512-6-3</i>	50g, 11 ms
Contact mating problems if shock occur, semi-sinusoidal <i>IEC 60512-2-5</i>	≤ 1 μs

### Electrical

Contact Resistance <i>IEC 60512-2-1</i>	≤ 25 mΩ Female --> Male ≤ 10 mΩ IDC --> Cable
Clearance and Creepage	min. 0.4 mm
Insulation Resistance <i>IEC 60512-3-1</i>	≥ 10 GΩ
Test Voltage <i>IEC 60512-4-1</i>	500 VAC

### Approval / Compliance

UL file	E130314
Environment	RoHS compliant

# Product Data Sheet

One27 Female IDC,  
Part No. 404-59026-61

---



## Modifications

Available on request

- different number of pins
- other performance level

## Drawings

Component data in 2D and 3D format you can download here:

[» PDF](#)

[» 3D IGES](#)

[» 3D STEP](#)

[» 3D PDF](#)