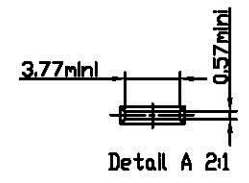
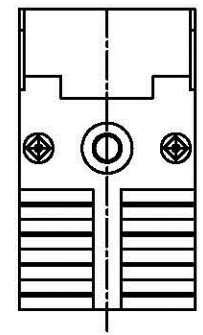
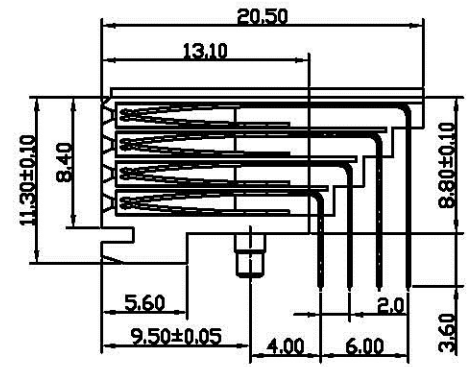
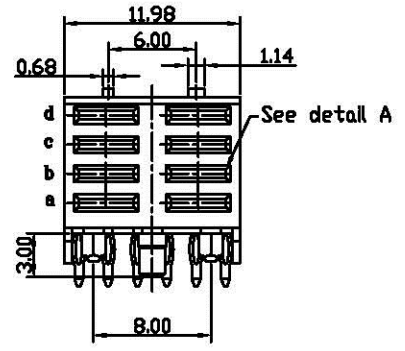


REVISIONS				
REV	DESCRIPTION	DATE	DRAWN	APPROVED
AO				



2.0mm FUTURE BUS

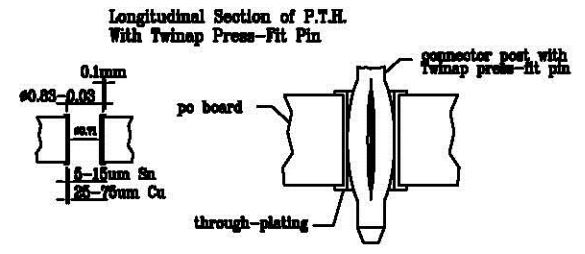
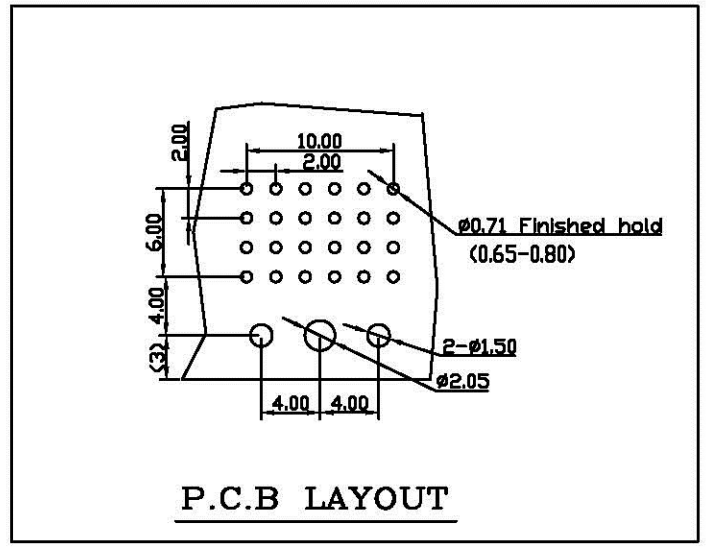
Female power right angle press fit, wide body-4 ROWS

Technical data

1688 Series	Power
Housing	Liquid Crystal Polymer(LCP) UL 94V-0
Contact	Female : Phosphor bronze
Contact area plating	Press fit type : Phosphor bronze
Operating temperature	10u" selective gold plated
Contact resistance	Tin plated on tails
Insulator resistance	-55°C ~ + 125°C
Current rating	30M(ohm)max.
Withstanding voltage	1000M(ohm)min.
Insertion force	3 AMP
Withdrawal force	AC 500V for 1 minute
Contact retention in housing	1.5 N max. per individual contact
RoHS Compliant	0.5 N min. per individual contact
	Female=5N, Male=10N

PCB Hole Tin Plated

Hole:	∅0.71mm
Bore hole:	0.80-0.83mm
Cu:	25-75um
Sn:	5-15um
Plated-Thru hole:	0.71mm
PCB Thickness:	≥1.6mm
Press in force per pin:	SINGAL 100N Max.POWER 300N Max.
Retention force per pin:	SINGAL 30N Max.POWER 90N Max.
RoHS Compliant	



MATERIAL:	DRAWN: <i>Lising</i> 2016.07.21	EPTSH				
FINISH:	DESIGN:					TITLE
ALL DIMENSIONS ARE IN mm	CHECKED:	ESH1688-P-8F10R01AP1				
THIRD ANGLE PROJECTION	APPROVED:					PART NUMBER:
UNLESS OTHERWISE SPECIFIED TOLERANCES ARE:		DRAWING NUMBER	REV	SCALE	SIZE	SHEET
GENERAL TOLERANCE			AO		A4	1 OF 1
ANGLE TOLERANCE						
X. ±0.30						
.X ±0.25						
.XX ±0.15						
.XXX ±0.05						
X' ±3.0°						
.X' ±2.0°						
.XX' ±1.0°						